

*Welcome to* **DBSJP**  
**SIXTH FORM CENTRE**



**DUBAI  
BRITISH  
SCHOOL**  
JUMEIRAH PARK



ENJOY . ASPIRE . ACHIEVE



**DUBAI  
BRITISH  
SCHOOL**  
JUMEIRAH PARK

# SIXTH FORM OPTIONS BOOKLET

2025-2026

**táaleem**  
inspiring young minds

# DUBAI BRITISH SCHOOL

JUMEIRAH PARK

## Contents Page



Introduction to the Sixth Form	4
The Sixth Form Curriculum Pathways	5
Entry Requirements	8
The Sixth Form - A Crucial Decision	12
Sixth Form Examination Fees	13
The Application Process	14
A Level Subject Options	16
BTEC Subject Options	49
Examination Agreement Forms	54

## A Level Subject Options

---

Art & Design	Geography
Business Studies	Graphic Communication
Biology	History
Chemistry	Mathematics
Computer Science	Further Mathematics
Design & Technology Product Design	Photography
Economics	Physics
English Literature B	Psychology
English Language	Spanish
French	

## BTEC Subject Options

---

Business Studies - Single Award  
Business studies - Double Award  
Travel & Tourism  
Sport  
Information Technology (IT)  
Performing Arts  
Applied Science  
Hospitality

# Introduction to the Sixth Form

Welcome to your Key Stage 5 Options Prospectus.

Our aim at Dubai British School Jumeirah Park is to provide our Post-16 students with a stimulating, purposeful and balanced curriculum, leading to qualifications that are internationally recognised and accepted as entry requirements for Higher Education. The purpose of this booklet is to:

- Present to parents and students the courses which are planned for A Levels and BTEC studies from September 2025
- Outline the content of each specification, as well as the course structure and assessment criteria
- Help you make informed decisions appropriate for the subsequent stages of student life

At Dubai British School Jumeirah Park there are a wide range of options available with three academic pathways on offer to our Sixth Form students:

**1. GCE Advanced Level (A Level)** Students can choose to study three A Level subjects and will undertake all units listed for the stand alone A Level qualification at the end of Year 13. Students who wish to study more than three subjects will need to have this agreed with Ms Samantha Evans.

## **2. International BTEC–Level 3 Qualifications**

Students can choose to study three BTEC courses. For this academic year, we are looking to offer BTEC Double Award Business Studies, BTEC Double Award Performing Arts (worth two BTEC), BTEC Single Award Business Studies, Travel and Tourism, Sport, Information Technology, Applied Science and Hospitality.

The International BTEC programme provides a specialist work-related programme of study that covers the key knowledge and practical skills required. It offers flexibility and a choice of emphasis through the specialist units. The qualifications offer an engaging programme for those who are clear about the area of employment that they wish to enter. The courses are practical and vocational and are closely linked to the world of work.

**3. A blended curriculum of A Level and International BTEC** Our option blocks are designed so that students may study a combination of A Level and BTEC courses. Students can select two A Levels and one International BTEC or one A Level and two International BTEC subjects.

**All of the above courses allow access to universities in the UK, USA, Canada and elsewhere in the world, students at all points of the options process, are well-advised to ensure their exit qualifications will satisfy higher education requirements for their desired destination.**



# The Sixth Form Curriculum Pathways

At Dubai British School Jumeirah Park we offer in Sixth Form where students select pathways based on their needs and interests. Students have the option to study a full suite of A Level option choices, a hybrid of A Level and BTEC's and BTEC only subjects. It is expected that the majority of students will complete the equivalent of three A Levels.

In line with other international and independent schools, subjects will only run with viable student numbers. The Leadership Team will do their utmost to ensure that students are supported with their first-choice options. On a course that enables them to excel.

Entry onto Sixth Form study is conditional and dependent upon students obtaining the (I)GCSE grade requirement for each individual subject, and the general requirements for A Level courses. In addition to this, students need to meet the "ready to learn" criteria that is behaviour dependent.

## Option Blocks

Students will choose three subjects from the option blocks. Students wishing to study a combination of four subjects from the blocks below must arrange a meeting with Ms Evans, the Head of Sixth Form and this is at the schools discretion.

Block A	Block B	Block C	Block D
Biology	Physics	Chemistry	Mathematics
BTEC Business Studies (S)	BTEC Science	BTEC IT	BTEC Travel & Tourism
Further Mathematics	BTEC Business Studies (D)	BTEC Performing Arts (D)	BTEC Sport
Business Studies	Graphic Communication	Economics	BTEC Performing Arts (T)
English Literature	Psychology	Computer Science	Photography
	English Language	Geography	French
	Art & Design	History	Spanish
	BTEC Performing Arts (S)	Product Design	
		BTEC Hospitality	

\* (S) Single Award      (D) Double Award      (T) Triple Award

Moral, Social and Cultural Studies, Arabic A and Islamic Studies is a statutory requirement linked to the MOE curriculum for the relevant students.

If you do the Double Award BTEC Business Studies this counts as two BTECs and must be studied in Block A as well as Block B; Similarly, if you do the Triple Award BTEC Performing Arts this must be studied in Block B, Block C and Block D,

.....

Please note that although we aim to provide students with their first choice, we cannot guarantee that all classes/ subjects will run and that students will automatically get their first choice of course. It is for this reason that we ask for your reserve course.

In addition to academic subjects, all students within the Sixth Form will follow our Super Curriculum, which is enriched by vertical tutor groups based on their specialisms.

## Super Curriculum

This is a programme designed to provide time and resources for university applications, in addition to supporting students in developing the knowledge and skills required to transition from Sixth Form to university life and/or the world of work.

At Dubai British School Jumeirah Park, our student-centered Personal Social Health Education (PSHE) structure is designed to holistically prepare students for life within and beyond our school community. Shaped by active student input, the curriculum integrates key components such as financial literacy, life skills, and future ambitions. This approach, guided by student voice, ensures that our PSHE programme remains relevant, engaging, and responsive to the evolving needs and aspirations of our students.

Some of the topics covered include Banking and Finance, International Laws and Regulations, Emergency First Aid, Digital Literacy and Innovation, and Cooking on a Budget! The Senior Leadership Team works to provide a structure that ensures students are prepared for application deadlines to institutions of higher education worldwide. Students will be invited to a host of university talks, in addition to receiving regular target setting with a career focus.

Below is the Senior Student Leadership structure.



## How do I choose?

Your final option and subject choices require careful research and thought. The following points will help you clarify your thinking:

- Be clear which options in Year 12 you are likely to meet the requirements of.
- Be clear about what each option and each subject entails.
- Talk to your teachers about your potential for Advanced Level study or BTEC and try to be realistic about your personal abilities, aptitudes, and skills.
- Base your choice on your academic interests and strengths.
- Use the opportunity to study subjects from more than one curricular area. Look at both A Level and BTEC courses.
- Be clear about the implications of your subject choice for future career options. If you need advice, consult your Form Tutors or Head of Year

Pathway	Strongly Advised Subjects	Supporting Subjects
Medicine, Dentistry and Veterinary Science	Chemistry, Biology and Physics	Mathematics
Biomedical Science	BTEC Science, Chemistry or Biology	BTEC Sport
Law	History or English (Literature or Language)	
Business Studies and Finance	BTEC Business Studies, Business Studies, Economics or Mathematics	Psychology, Geography
Engineering	Mathematics and Physics	Further Mathematics, 3D Design or Chemistry (if Chemical Engineering)
Architecture	Physics and Mathematics	3D Design
Interior Design	Art or Photography	3D Design
Computer Science/ Cybersecurity/AI	Computer Science or BTEC Information Technology	Mathematics
Media/Journalism	English Language	History or Photography
Performing Arts	BTEC Performing Arts	
Hospitality	BTEC Travel and Tourism, Geography or Psychology, BTEC Hospitality	
Creative Arts	Art or Photography	3D Design
Innovation and Design	Product Design, Computer Science, BTEC Information Technology or Physics	
Psychology	Psychology	Biology, BTEC Science, English Language, BTEC Sport
Sport Science	BTEC Sport	Biology, BTEC IT

# Entry Requirements

The Sixth Form at Dubai British School Jumeirah Park is open to all who are qualified by ability and attitude. Generally, those who are admitted to the Sixth Form will have a range of examination success at (I)GCSE Level and will be capable of moving on to advanced study. Students that do not meet the ready to learn conduct will not be successful in their Sixth Form application

Progression on to Year 13 courses is subject to Internal Assessments and attendance being in line with KHDA requirements.

## A Level Pathway Entry Requirements:

- Students must have a total of six 9-5 GCSE or (I)GCSE Grades including Mathematics and English Language.
- Minimum of Grade 7 of chosen subject at A Level.
- Language students must meet Head of Department.

## BTEC Pathway Requirements

- Students must have a total of four 9-4 Grades at (I)GCSE Level, including Mathematics and English Language



## Hybrid Pathway (Combination of A Level and BTEC Students

- Students must have a total of five 9-4 grades including Mathematics and English Language.
- A minimum of grade 7 of chosen subject at A Level.
- Language students must meet Head of Department.

In choosing A Level courses, students, at one time, concentrated on either three Arts / Humanities subjects or three Science subjects. However, mixed A Levels have become more common.

In UK universities, most Science degrees require students to have two A Levels in Science (including Mathematics) by Year 13. Therefore, a combination of two Sciences and one Arts or Humanities subject is ideal for students focused on Science. Conversely, taking one Science alongside two Arts or Humanities subjects provides a strong foundation for many degrees in those fields.

There are, of course, some UK degree courses which demand specific A Levels. For instance, those wishing to take English, History, Geography, Mathematics or a language will be expected to take it at full A Level, but this tends to take care of itself in that, if you're that keen on English, you will have chosen it at A Level anyway. The slightly less obvious areas to be aware of are:

- Biochemical courses ask for A Level Chemistry and at least one other Science; Neuroscience type degrees often also treat A Level Psychology or A Level Biology.
- Engineering courses ask for A Level Mathematics and A Level Physics.
- Many Economics degrees ask for at least an A Level in Mathematics.
- You increasingly need all Grade 7-9 results at GCSE to have a chance with a successful application to top universities.



# Careers

There are many degree courses such as Business Studies or new Media degree specialisms that accept virtually any combination of A Levels or BTEC courses. Many admissions tutors and, for that matter, many employers are more interested in a student's level of success Post 16 than the subjects taken. We all know that we tend to succeed in something which we enjoy, and which suits our skills and abilities. Therefore, while bearing in mind any possible career implications, students should be primarily guided by the two criteria of aptitude and interest that determined their earlier choice at GCSE.

If you wish to aim for the very top universities, you should seek the advice of our careers advisor early in the process as to what your chances are and what route will best support this. Support will be given through the Oxbridge Programme.

The Oxbridge Programme at Dubai British School Jumeriah Park is a dedicated initiative designed to support students with aspirations of attending Oxford or Cambridge University, providing them with tailored guidance throughout the competitive application process. Students on the programme receive specialised support in selecting the most rigorous and relevant A-level subjects, ensuring they meet the high academic standards required by both institutions. The programme also includes comprehensive preparation for the specific admissions tests for their chosen courses, including practice exams and strategies to develop critical thinking and problem-solving skills. In addition, students are assisted in crafting strong personal statements, highlighting their intellectual curiosity and extracurricular achievements, and in preparing for the intensive interview process through mock interviews with former Oxbridge students.

To further enhance their applications, the programme encourages engagement with academic competitions, summer schools, and independent research projects, while also offering advice on securing strong references from teachers. By providing both academic and personal development support, the Oxbridge Programme equips students with the tools they need to navigate the complexities of the application process and maximise their potential for success at two of the world's most prestigious universities.

You can contact our career advisor on: [careersjp@dubaibritishschooljp.ae](mailto:careersjp@dubaibritishschooljp.ae)

## Creative A Levels

Certain A Levels are regarded by universities as creative: these include Art and Drama. Universities generally recommend that students should do two out of their three final A Levels in such subjects if they wish to pursue an academic degree course. These subjects have their own strengths, so do not be put off by this if you have a genuine interest in them. If you wish to pursue Art and Design at college, you need a portfolio, and it is advantageous to take A Level Art/ Photography.

## Students Destined for the United States of America

Most of the advice above applies equally to students planning to further their education in the USA. However, it is not essential for these students to have their subject choices as finely-tuned as UK bound students. This is because American degree courses take four years of study; the first two years are broad and generalised and provide a breathing space in which students can decide the area in which they wish to major in.

## Students Destined for the United States of America

Most of the advice above applies equally to students planning to further their education in the USA. However, it is not essential for these students to have their subject choices as finely-tuned as UK bound students. This is because American degree courses take four years of study; the first two years are broad and generalised and provide a breathing space in which students can decide the area in which they wish to major in.

Whereas a UK student hoping to study Medicine would certainly have to choose Chemistry at A Level, this would not be so urgent in the USA where Medicine is a postgraduate course, as is Law. Most universities offer credit for A Levels which can allow students to graduate in three rather than four years. Students should note that the same credit is not offered for AS Levels, and that we do not offer AS Level option at Dubai British School Jumeirah Park.

American colleges recognise A Levels as a demanding qualification and students are in no way disadvantaged by remaining in our Sixth Form school. Indeed, the better US colleges are making it increasingly clear that they expect students to complete their A Levels and some, such as the University of California, are now stipulating the grades they expect. Similarly, the school expects students who enter Advanced Level courses to show a determination to complete them successfully.



Students heading for the USA should realise that besides the heavy A Level workload, the college application process is demanding in terms of time and effort. You may have to sit the Scholastic Assessment Test (SAT) or American College Testing (ACT). For universities in Canada, Australia, New Zealand and South Africa, A Levels are a recognised global qualification and you can apply to the countries above with A Levels. Higher Education courses in these countries may ask for specific subjects at A Level but they may refer to them as pre requisites or assumed knowledge.

Where students know their Higher Education plans, they should investigate such requirements but be careful not to confuse a requirement for English 'proficiency' with a demand for English A Level.

If you would like more specific advice in this area, then please contact the Head of Sixth Form Ms Samantha Evans at [sevans@dubaibritishschooljp.ae](mailto:sevans@dubaibritishschooljp.ae).

# Entry Requirements

<b>Art &amp; Design</b> Art: Grade 7 <b>or</b> portfolio demonstrating ability	<b>Business Studies</b> Mathematics & English Language: Grade 6 Business Studies (if studied): Grade 6
<b>Biology</b> Triple Science: Grade 7 in Biology with a grade 6 or above in Chemistry and Physics <b>or</b> Combined Science: Grade 7,7, with grade 7 in Biology components	<b>Chemistry</b> Triple Science: Grade 7 in Chemistry with a grade 6 or above in Biology and Physics <b>or</b> Combined Science: Grade 7,7, with grade 7 in Chemistry components
<b>Computer Science</b> Mathematics & English Language: Grade 7 Computer Science (if studied): Grade 7	<b>Graphic Communication</b> Graphic Communication: Grade 7 <b>or</b> portfolio demonstrating ability in art, design or photography
<b>Product Design</b> Design Technology: Grade 6 or portfolio demonstrating ability	<b>Economics</b> Mathematics & English Language: Grade 7
<b>English Literature B</b> English Literature: Grade 7 <b>and</b> English Language: Grade 7 - examination component only for both	<b>English Language</b> English Language: Grade 7 <b>and</b> English Literature: Grade 7 - examination component only for both
<b>French</b> French: Grade 6 in GCSE	<b>Geography</b> Mathematics & English Language: Grade 6 Geography (if studied): Grade 6
<b>History</b> English Language: Grade 6 History (if studied): Grade 6	<b>Mathematics</b> Mathematics: Grade 7
<b>Further Mathematics</b> Mathematics: Grade 8	<b>Photography</b> Photography: Grade 7 <b>or</b> portfolio demonstrating ability
<b>Physics</b> Triple Science: Grade 7 in Physics with a grade 6 or above in Chemistry and Biology <b>or</b> Combined Science: Grade 7,7 <b>and</b> Mathematics: Grade 7 with a grade 7 in Physics components	<b>Psychology</b> Mathematics & English Language: Grade 6 Biology: Grade 6 (or Combined Science Grade: 6,6) Psychology (if studied): Grade 6
<b>Spanish</b> Spanish: Grade 6 in GCSE	

# The Sixth Form – A Crucial Decision

The choices you make, about what and where to study in the Sixth Form, will have a significant bearing on your future life and career. The qualifications you acquire, the personal qualities and life skills that develop and the friendships you forge will all be crucial in determining how you cope with the transition from school to adult life, and your success in an increasingly competitive world.

## Policy on Year 12 Admissions

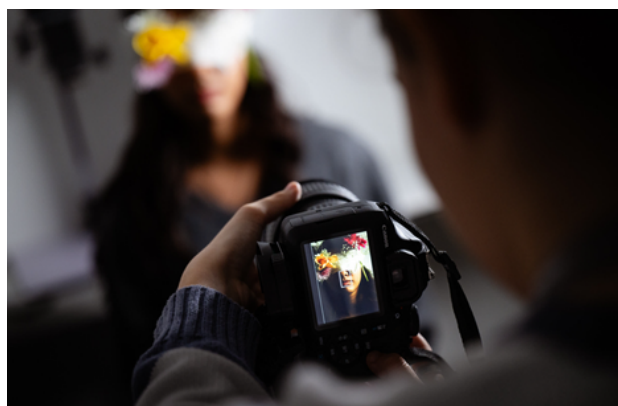
- All admissions are subject to the overriding proviso that we can construct a reasonable timetable. Provisional admission is no guarantee that a reasonable timetable is possible.
- We reserve the right to refuse entrance to Year 12 or to a subject, even if a student has met the grade entry requirements, if we feel he/she will not cope academically or be disruptive to the learning environment.
- We reserve the right to refuse entrance to Year 12, even if a student is academically qualified, if their conduct is not exemplary and in line with our ready to learn behaviour policy.
- In some subjects where there are more students wishing to take the subjects than places available, we may demand higher qualifications (e.g. Grade 7 at GCSE Level, a range of reasonable GCSE Level results). We cannot legislate for this until the demand for places is known.

### Examination Entry Policy

Students are fully supported in their studies. As part of this, we regularly monitor student performance and attitude, and where appropriate, will discuss with parents the options ahead for their exam entries. Concerns may be discussed if:

- Internal monitoring shows students struggling academically with one of their subjects (achieving below a good pass - D or below) and/or
- Attendance to the school becomes a concern, dropping to below 85% (KHDA parent/student contract)

A potential outcome would be that students are advised to drop an exam subject and increase their focus on their remaining subjects, to improve the likelihood of examination success in these. Students/parents may choose to continue with all their subjects, and the school will support this in facilitating a private entry into the exam. This discussion will happen in conjunction with the Deputy Head teacher and the Secondary Head teacher.





# Sixth Form Examination Fees

Please note that in line with other independent schools, Dubai British School Jumeirah Park charges for all external examinations. Parents will receive invoices which will cover fees for the examinations carried out during Years 12 and 13.

## A Level

Parents should note that fees for external A Level examinations are the responsibility of the parent. Parents will receive an invoice for each examination cycle the student is entered for, including resits.

## BTEC

Registration fees for the BTEC courses are paid in full at the beginning of Year 12 for the full duration of the two year course. The fee charged will cover the entry fees for the course as well as moderator visits from the UK for each subject. Any resit of units within the course does not incur additional charges over and above the original fee paid.

Once enrolled in the BTEC course, students are obligated to fulfill the associated financial responsibilities, including the payment of fees, irrespective of whether they decide to discontinue the course prematurely.

## Other costs

Students that require additional access arrangements during examinations, for example, the use of a reader or a scribe, will incur additional costs for invigilation. Certificates may be withheld if examination fees /textbooks are outstanding and not cleared.



# The Application Process

Please be very aware that we cannot guarantee that every option choice you make will be available. The application process for entry into the Sixth Form follows this easy four stage process.

## **STAGE 1: Information Gathering**

We advise current students to engage positively with Pastoral and supervised private study sessions and utilise the resources provided to research your future plans thoroughly. Attend the Sixth Form Options Evening, and take the opportunity to discuss your options with subject specialists and as a family



## **STAGE 2: The Application Form**

Complete the Sixth Form application form in this pack, indicating your preferred options and submit via the Microsoft form (For Dubai British School Jumeirah Park pupils only). If you are new to the school, please submit the paper application form to Admissions. Please ensure that you are realistic in your choices.



## **STAGE 3: The Interview**

Following the submission of your application form, you will be called for a short interview with our staff panel to discuss your options further.



## **STAGE 4: The Decision!**

On results day, you will be able to confirm with Ms Evans and Senior Leadership members whether you have met the entry requirements for your desired choices.



**DUBAI  
BRITISH  
SCHOOL**  
JUMEIRAH PARK

# A LEVEL SUBJECT OPTIONS



# Art and Design – AQA – A Level 7202 / 7205

## Course Outline

The new course is designed to encourage an adventurous and enquiring approach to Art and Design. Students are expected to demonstrate an understanding of past and contemporary Art and Design practice and be able to produce artwork that embraces a range of ideas.

## Course Requirement and Progression

It is not a prerequisite that a student wishing to study A Level Art must have completed GCSE Art and Design, however the student will be expected to produce evidence in the form of a portfolio of work to demonstrate an ability in drawing and interest in the subject before being accepted onto the course. Entry onto the course will require a Grade 7 at GCSE or equivalent.

## Course Details

### Art and Design Year 1 Content

#### Personal Investigation

This component allows students opportunities to generate and develop ideas, research primary and contextual sources, record practical and written observations, experiment with media and processes, and refine ideas towards

producing personal resolved outcome(s). The focus of Year 12 is to concentrate on developing the core skills in Art and Design. Students have the opportunity to explore all the various disciplines offered within the subject whilst developing their painting and drawing skills in all their various forms.

### Art and Design (All exams are taken at end of Year 13)

#### UNIT 1

##### Part 1: Personal investigation worth 60% Coursework

The personal investigation allows students to generate and develop ideas, research both primary and contextual sources, record practical and written observations, experiment with media and processes and refine ideas towards producing resolved outcomes.

##### Part 2: Personal study - Essay

The personal study will be evidenced through critical written communication

showing contextual research and understanding in a minimum of 1000 words of continuous prose, which may contain integrated images (60% of final A Level grade).

#### UNIT 2

##### Externally assessed assignment

This component allows students opportunities to generate and develop ideas, research primary and contextual sources, record practical and written observations, experiment with media and processes, and refine ideas towards producing personal resolved outcomes in response to an externally set theme. A 15-hour controlled assessment will end the component.

(40% of final A Level grade)



## Assessment Criteria

---

A Level Qualification: -

- A Level Component 1 - Internally set, internally marked and externally moderated
- A Level Component 2 - Externally set, internally marked and externally moderated
- Four assessment objectives must be met throughout the course, these objectives focus on research, experimenting, generating ideas and outcomes

## Career Prospects

---

A qualification in Art and Design A Level can be used in many career paths, some of which you may not have considered; Architect, Art Historian, Publisher, Gallery Manager, Writer/ critic, Game Designer, Stop Motion Animator, Interface Designer, Advertiser, Web Designer, Furniture Designer, Graphic Designer, Illustrator, Interior Designer, Printmaker, Product Designer, Fashion Designer, Video/film/photographer, Sculptor, Teacher or Lecturer.





# Business Studies– Edexcel – A Level 9BS0

## Course Outline

Business Studies at this level encompasses many disciplines and covers different forms of organisations and business activity. This course aims to make you think critically about business, in terms of both their positive and negative aspects. This course integrates ideas drawn from various disciplines, including Economics, Accounting, Law, Politics, Sociology, and Psychology.

## Course Requirement and Progression

To follow the Business Studies course, because the subject is largely based on developing certain numerical skills and requires higher-level writing skills, a Grade 6 or higher at (I)GCSE Mathematics and English Language are required. If you have studied Business Studies at GCSE level, you will need to have achieved a minimum of a grade 6 to meet the course requirements.

## Course Details

A Level - Business Studies	<b>Theme 1</b> Marketing and People Including:		<b>Theme 3</b> Business Decisions and Strategy Including:	
	<ul style="list-style-type: none"><li>• Customer needs</li><li>• The market</li><li>• Marketing mix</li><li>• Managing people</li><li>• Entrepreneurs</li></ul>		<ul style="list-style-type: none"><li>• Objectives and strategy</li><li>• Business growth</li><li>• Decision-making techniques</li><li>• Assessing competition</li><li>• Managing change</li></ul>	
	<b>Theme 2</b> Managing Business Activities Including:		<b>Theme 4</b> Global Business Including:	
	<ul style="list-style-type: none"><li>• Raising, planning and managing finance</li><li>• Resource management</li><li>• External influences</li></ul>		<ul style="list-style-type: none"><li>• Globalisation</li><li>• Global markets</li><li>• Business Expansion</li><li>• Global marketing</li><li>• Multinationals</li></ul>	
A Level - Business Studies	<b>Examinations A Level</b>			
	Paper 1:  Marketing, People & Global businesses  Written examination 2 hours from themes 1 and 4 (35% of final A Level grade)	Paper 2:  Business activities, decisions and strategy  Written examination 2 hours from themes 2 and 3 (35% of final A Level grade)	Paper 3:  Investigating business in a competitive environment  Written examination from all themes (30% of final A Level grade)	

## Assessment Criteria

---

The course is structured into four Themes and consists on three externally examined papers.

Students are introduced to business in Themes one and two through building knowledge of core business concepts and applying them to business contexts to develop a broad understanding of how businesses work. Breadth and depth of knowledge and understanding, with application to a wider range of contexts and more complex business information, are developed in Theme three and four, requiring students to take a more strategic view of business opportunities and issues.

Students are encouraged to use an enquiring, critical and thoughtful approach to the study of business, to understand that business behaviour can be studied from a range of perspective and to challenge assumptions.

## Career Prospects

---

Many students use their Business Studies A Level to go directly into employment in a related field of work. When combined with Economics, Mathematics, Information Communication Technology or English it makes a strong combination for a number of related degrees in many fields of Management, Finance, Law and Economics.





# Biology – Edexcel – A Level 9BI0

## Course Outline

Biology at A Level covers a range of topics, but importantly the Biology specification emphasises linking these topics to current health, conservation, and pharmacological issues to develop a better understanding of Biology as it relates to everyday life.

## Course Requirement and Progression

To follow the Biology course, you need to have achieved at least a Grade 7 in GCSE Biology with a Grade 6 or above in both GCSE Chemistry and Physics. Students that have studied GCSE Combined Science should have achieved at least a Grade 7,7 with a Grade 7 in the Biology components. Studying Chemistry at A Level is also a distinct advantage.

You will need a solid grounding in analytical, numerical and written skills too. Those students applying who have not studied GCSEs will be considered on a case-by-case basis.

## Course Details

Year 1 Content  
Biology

### Core Cellular Biology and Microbiology

Topic 1: Biological Molecules  
Topic 2: Cells, Viruses and Reproduction of Living Things

### Core Physiology and Ecology

Topic 3: Classification and Biodiversity  
Topic 4: Exchange and Transport

*\* As level biology exams do not count towards the a level qualification*

A Level - Biology

(All exams are taken at end of Year 13)

### Paper 1

#### Advanced Biochemistry, Microbiology and Genetics

Topic 1: Biological Molecules  
Topic 2: Cells, Viruses, and Reproduction of Living Things  
Topic 3: Classification and Biodiversity  
Topic 4: Exchange and Transport  
Topic 5: Energy for Biological Processes  
Topic 6: Microbiology & Pathogens  
Topic 7: Modern Genetics  
Topic 8: Origins of Genetic Variation  
Topic 9: Control Systems  
Topic 10: Ecosystems

#### A written paper of 1hr 45 mins

(30% of final A Level grade)

### Paper 3

#### General and Practical Principles in Biology

This paper will include questions from Topics 1 -10  
written paper of 2hr 30 mins  
(40% of final A Level grade)

### Paper 2

#### Advanced Physiology, Evolution, and Ecology

Topic 1: Biological Molecules  
Topic 2: Cells, Viruses, and Reproduction of Living Things  
Topic 3: Classification and Biodiversity  
Topic 4: Exchange and Transport

#### A written paper of 1hr 45 mins

(30% of final A Level grade)



## Course Outline

---

The specification followed is the one offered by Edexcel. The A Level Biology course is assessed entirely by means of examination.

## Practical Endorsement

---

There is a Pass/Fail practical element to this course. Students must have consistent good attendance and complete all required practical's during the 2 years to pass the practical endorsement,

## Career Prospects

---

An annual Biology field trip will be organised that students will be expected to attend as part of the course. Many students use their Biology A Level to go on to higher education to study Science related courses. This could lead to a career in Medicine, Biotechnology, Ecology, Environmental Science and a number of other science-related careers.





# Chemistry – Edexcel – A Level 9CH0

## Course Outline

Studying Chemistry is a practical experience for students. There are practical activities embedded in each unit to reflect the nature of Chemistry. A strong mathematical ability is a requirement as there are many stoichiometry calculations. The aim of this course is to increase the enjoyment and understanding of Chemistry together with providing students with the skills needed to study Science at higher levels. It enables motivating, contemporary Chemistry contexts to be learnt and students study aspects of Chemistry that are often in the media and affect their lives including climate change, green Chemistry, pharmaceuticals & Chemistry research.

## Practical Endorsement

There is a Pass/Fail practical element to this course. Students must have consistent good attendance and complete all required practicals during the 2 years to pass the practical endorsement.

## Course Details

## Course Requirement and Progression

To follow the A Level Chemistry course you need to have achieved at least a Grade 7 in GCSE Chemistry and a Grade 6 or above in both GCSE Biology and GCSE Physics. Students that have studied GCSE Combined Science should have achieved at least a Grade 7, 7 with a Grade 7 in the Chemistry components. In addition, because the subject is based on developing quantitative skills, a Grade 7 or higher at (I)GCSE Mathematics (or equivalent) is recommended. Those students applying who have not studied GCSEs will be considered on a case-by-case basis.

## Career Prospects

After studying A level Chemistry many career pathways are available. Chemistry is a fundamental requirement when pursuing a career in Medicine or any Healthcare related field. In addition, there are many type of engineering that require Chemistry due to the critical thinking aspect that an A level in Chemistry demonstrates you possess. Chemistry also enhances your laboratory skills, therefore research based careers prefer you to possess A level Chemistry.

### A Level Chemistry

#### Paper 1: Advanced Inorganic and Physical Chemistry

- Topic 1: Atomic Structure and the Periodic Table
- Topic 2: Bonding and Structure
- Topic 3: Redox I
- Topic 4: Inorganic Chemistry and the Periodic Table
- Topic 5: Formulae, Equations and Amounts of Substance
- Topic 8: Energetics I
- Topic 10: Equilibrium I
- Topic 11: Equilibrium II
- Topic 12: Acid-base Equilibria
- Topic 13: Energetics II
- Topic 14: Redox II
- Topic 15: Transition Metals

#### Paper 2: Advanced Organic and Physical Chemistry

- Topic 2: Bonding and Structure
- Topic 3: Redox I
- Topic 5: Formulae, Equations and Amounts of Substance
- Topic 6: Organic Chemistry I
- Topic 7: Modern Analytical Techniques I
- Topic 9: Kinetics I
- Topic 16: Kinetics II
- Topic 17: Organic Chemistry II
- Topic 18: Organic Chemistry III
- Topic 19: Modern Analytical Techniques II



# Computer Science

## Course Outline

Computers are everywhere nowadays, supporting us in everything from how we conduct business to socialising. A Level Computer Science will allow you to explore the fundamentals of computing with hardware, looking at many aspects from how they work to how to effectively program them.

## Course Requirements

To follow the Computer Science, because the subject is largely based on developing certain numerical skills and requires higher-level writing skills a Grade 7 or higher at (I)GCSE Mathematics and English Language are required. If you have studied Computer Science at (I)GCSE level, you will need to have achieved a minimum of a Grade 7 to meet the course requirements.

### Year 1 Content

Fundamentals of programming  
Fundamentals of data structures  
Systematic approach to problem solving  
Theory of computation  
Fundamentals of data representation  
Fundamentals of computer systems  
Fundamentals of computer organisation and architecture  
Consequences of uses of computing  
Fundamentals of communication and networking

### Paper 1

This paper tests a student's ability to program, as well as their theoretical knowledge of Computer Science.

**40% On-screen examination of 2 hours and 30 minutes.**

### Non-Exam Assessment (NEA)

The non-exam assessment assesses student's ability to use the knowledge and skills gained through the course to solve or investigate a practical problem. Students will be expected to follow a systematic approach to problem solving.

- **75 marks, 20% of A Level**

### Paper 2

This paper tests the students understanding of the theoretical concepts from A level content above.

**40% Written exam of 2 hours and 30 minutes.**

**A Level - Computer science**  
(All exams are taken at the end of Year 13)

## Assessment Criteria

The specification followed is the one offered by AQA. The course has two exams, each at 40% of the final grade, one screen-based and the other written plus a problem solving based NEA of 20%.

## Career Prospects

Many students use their Computer Science A Level to go on to higher education to study related courses. This could lead to a career in programming, networking, web development, working with data and much more.

## Assessment Criteria

---

- A Level Component 1 - Internally set, internally marked and externally moderated
- A Level Component 2 - Externally set, internally marked and externally moderated
- Four assessment objectives must be met throughout the course, these objectives focus on research, experimenting, generating ideas and outcomes
- A Level can be sat in one year or two years and does not need to follow on from AS. 9 Graded students at GCSE will be encouraged to go straight on to A Level

## Career Prospects

---

Many students go on to study visual communications, graphic design, illustration or other art and design courses at university or college. There are also opportunities to enter apprenticeships in design roles that offer a more immediate path to industry. Careers may include Game Designer, Illustrator, Graphic Designer, Animator, Interface Designer, Advertiser, Web Designer, Teacher or Lecturer.







# Design & Technology Product Design – AQA – A Level 7552

## Course Outline

This creative and thought-provoking qualification gives students the practical skills, theoretical knowledge and confidence to succeed in a number of careers. Especially those in the creative industries. They will investigate historical, social, cultural, environmental and economic influences on design and technology, whilst enjoying opportunities to put their learning in to practice by producing prototypes of their choice and working with a range of materials and manufacturing processes. The theoretical elements of the course will be taught in both Year 12 and Year 13 and then examined by two written papers at the end of the course. Paper 1 will assess core technical principles

(30% of A level) whilst Paper 2 will assess making principles (20% of A level). The Non-exam assessment (NEA) of approximately 45 hours, is 50% of the overall A Level grade.

## Course Requirements

This course requires students to engage in both practical and theoretical study and to be both analytical and logical thinkers and creative risk-takers. There is also a 15% mathematics skills component

over the two written papers; students need to be good communicators using both written, and drawing skills and proficient in 3DCAD. Those who wish to study Product Design at A level require a Grade 6 in GCSE Design Technology

## Course Details

### A Level Design & Technology Product Design

#### UNIT 1 Technical Principles – 30% of

##### overall grade (Examination)

This unit will be taught via project work and theory lessons

- Materials and their applications
- Performance characteristics of materials
- Forming, redistribution and addition processes
- The use of adhesives and fixings
- The use of finishes
- Modern industrial and commercial practice
- Efficient use of material
- Digital design and manufacture
- Health and safety
- Protecting designs and intellectual property
- Design for manufacturing, maintenance, repair, and disposal
- Enterprise and marketing in the development of products
- Design communication
- The requirements for product design and development



## Course Details

### A Level Design & Technology Product Design

#### UNIT 2

##### **Making Principles – 20% of overall grade (Examination)**

This unit will be taught via project work and theory lessons

- Design methods and processes
- Design theory
- How technology and cultural changes can impact on the work of designers
- Accuracy in design and manufacture
- Design for manufacture and project management
- Design processes
- Critical analysis and evaluation
- Selecting appropriate tools, equipment, and processes
- Responsible design
- National and international standards in product design

#### UNIT 3

##### **NEA Task 50% of overall grade (Coursework)**

This Unit will be conducted in class for over 45 hours.

Written or digital design portfolio and photographic evidence of final prototype, context set by exam board student to investigate own response





# Economics – Edexcel – A Level

## Course Outline

This course will be of interest if you want background knowledge of how markets work and the economic reasoning behind Government Policy. By providing you with some theoretical ideas that you then apply to topical areas of interest, like employment, trade policy and inflation, we hope a critical understanding of the UK economy will be developed.

Economics also requires some ability in interpreting statistical data, graphs and diagrams, with more subtle interpretation needed at A Level. The first year of the course involves studying the principles that underpin economic thinking,

developing a 'toolkit' of economic ideas, and then practising these on a wide range of practical issues, using as sources current periodicals, newspapers and the internet..

## Course Requirement and Progression

To follow the Economics, because the subject is largely based on developing certain numerical skills and requires higher-level writing skills a Grade 7 or higher at (I)GCSE Mathematics and English Language are required.

Worthwhile combinations with A Level Economics are Mathematics, English, Business Studies, Psychology, History, or Geography.

## Course Details

**A Level – Economics**  
(All exams are taken at the end of Year 13)

### Theme 1

This theme focuses on microeconomic concepts. Students will develop an understanding of:

- Nature of economics
- How markets work
- Market failure
- Government intervention

### Theme 2

This theme focuses on macroeconomic concepts. Students will develop an understanding of:

- Measures of economic performance
- Aggregate demand
- Aggregate supply
- National income
- Economic growth
- Macroeconomic objectives and policy

### Theme 3

This theme develops the microeconomic concepts introduced in Theme 1 and focuses on business economics. Students will develop an understanding of:

- Business growth
- Business objectives
- Revenues, costs, and profits
- Market structures
- Labour market
- Government intervention

### Theme 4

This theme develops the macroeconomic concepts introduced in Theme 2 and applies these concepts in a global context. Students will develop an understanding of:

- International economics
- Poverty and inequality
- Emerging and developing economies
- The financial sector
- Role of the state in the macro-economy

### **Paper 1**

Markets and business behaviour from Themes 1 and 3

### **Written examination 2 hours**

(35% of A Level grade)

### **Paper 2**

The national and global economy from Themes 2 and 4

### **Written examination 2 hours**

(35% of A Level grade)

### **Paper 3**

Microeconomics and macroeconomics from all 4 themes

### **Written examination 2 hours**

(30% of A Level grade)

## **Assessment Criteria**

The Advanced GCE in Economics is structured into four themes and consists of three externally examined papers. Students build knowledge and understanding of core economic models and concepts in Themes 1 and 2, and then build on this and apply their knowledge to more complex concepts and models in Themes 3 and 4. Students will need to apply their knowledge and understanding of both familiar and unfamiliar contexts in the assessments and demonstrate an awareness of current economic events and policies.

## **Career Prospects**

Economics is a well-respected subject in which many students go on to study at University. However, there is a range of potential future careers which include professional economist, banking and finance, consultancy, civil service, financial PR, statistics, marketing and quantitative surveyor to name few.





# English Literature B – AQA – A Level 7717

## Course Outline

This course will be of interest if you have a genuine passion for English Literature. Through the study of influential works from the English Canon, students will develop a greater insight into the core values that underpin modern society and a deeper understanding of the human condition. The subject is available to study as a two-year A Level course. All exams take place at the end of Year 13. Independent study and wider reading are fore fronted in the specification and students should be prepared for extensive reading of poetry, prose, drama, non-fiction and literary criticism relevant to the course. The variety of assessment styles used, such as passage-based questions, unseen material, single text questions, multiple text questions and open and closed-book.

approaches allows students to develop a wide range of skills, such as the ability to read critically, analyse, evaluate and undertake independent research which is valuable for both further study and future employment.

## Course Requirements

To follow the English Literature course, because higher-level writing and reading skills is required, a Grade 7 or higher in both of the English Language and English Literature examinations component only.

Especially worthwhile combinations with English Literature are History, Geography, Sociology, Economics and Drama, although, for University entry, English Literature is a highly rated academic subject across the board.

## Course Details

<b>A Level - English Literature</b> (All exams are taken at the end of Year 13)	<b>UNIT 1</b>  <b>Literary Genres</b> <b>Option 1A - Aspects of Tragedy</b> <ul style="list-style-type: none"> <li>Study of three texts: one Shakespeare text, a second drama text and one further text, of which one must be written pre-1900</li> <li>A written paper of 2hrs 30 mins</li> <li>Closed book exam. (40% of total A Level final grade)</li> </ul>	<b>UNIT 3</b>  <b>Non-exam Assessment</b> <b>Theory and Independence</b> <ul style="list-style-type: none"> <li>Study of two texts: one poetry and one prose text, informed by a study of the Critical Anthology</li> <li>Two essays of 1250 -1500 words, each responding to a different text and linking to a different aspect of the Critical Anthology. This will explore:               <ul style="list-style-type: none"> <li>Ideas about narrative;</li> <li>Marxist ways of reading;</li> <li>Feminist ways of reading;</li> <li>Post-colonial ways of reading;</li> <li>Ecocritical ways of reading;</li> <li>Literary value and the canon.</li> </ul> </li> </ul>
	<b>UNIT 2</b>  <b>Texts and Genres</b> <b>Option 2A – Elements of Social and Political Protest Writing</b> <ul style="list-style-type: none"> <li>Study of three texts: one post-2000 prose text; one poetry and one further text, one of which must be written pre-1900. The exam will include an unseen passage</li> <li>A written paper of 3 hours -Open book</li> <li>40% of total A Level final grade)</li> <li>English Literature B – AQA – A Level 7717</li> </ul>	<ul style="list-style-type: none"> <li>One essay can be re-creative.</li> <li>The re-creative piece will be accompanied by a commentary</li> <li>Work assessed by teachers &amp; moderated by AQA</li> <li>20% of total A Level final grade)</li> </ul>

## Career Prospects

Journalism, Law, Teaching, Publishing, Freelance Writer, Copywriter, Marketing

## Assessment Criteria

The specification followed is the one offered by AQA – English Literature Specification B.





# English Language – AQA – A Level 7702

## Course Outline

This course will be of interest if you wish to polish fundamental academic skills as well as actively engage with the English language in its many forms and diversities. The English Language A Level is an interesting and stimulating course that will challenge students in the technical and scientific areas of language and linguistics. Students should be prepared for the in-depth study of language varieties, language diversity, and change, language discourses as well as working on the development of language analysis and writing skills. This course explores the English Language as both a medium of communication, and a topic in its own right, with an emphasis on pursuing lines of enquiry,

debate, independent research of language in use, as well as understanding language as a creative tool for expression, social connection, and the implementation of power.

## Course Requirements

To follow the English Language course you would be expected to achieve at least a Grade 7 in the examination component of both English Literature and English Language at GCSE. It would also be preferable to have studied a Modern Foreign Language at GCSE level with a Grade of at least a 7.

Worthwhile combinations with A Level English Language are Modern Foreign Languages, English Literature, Sociology, Psychology, Business Studies and History.

## Course Details

**A Level - English Language**  
(All exams are taken at the end of Year 13)

### UNIT 1

#### Language, the individual, and society

- Textual variations and representations, children's language development, and language analysis
- A written paper of 2hrs 30 mins
- (40% of total A Level final grade)

### UNIT 2

#### Language Diversity and Change

- Language diversity and change, language discourses, writing skills, and language analysis.
- A written paper of 2hrs 30 mins
- (40% of total A Level final grade)

### UNIT 3

#### Non-exam assessment Language in Action Language investigation and Original Writing

- Students produce - An independent research study on language investigation (2,000 words)
- A piece of original writing and commentary (1,500 words)

#### Work assessed by teachers & moderated by AQA

- (20% of total A Level final grade)

## Career Prospects

The course would be particularly beneficial for those looking to pursue a career in Communications, the Media, Journalism, Law, Politics, PR, International Relations or Business Studies.

## Assessment Criteria

The specification followed is the one offered by AQA – English Language.





# French – AQA– A LEVEL 7652

## Course Outline

The study of any Modern Foreign Language at A Level should both develop linguistic competence and allow a real insight into the culture of the countries where the language is spoken. By continuing to study a language beyond GCSE, you will:

- Develop control of the language system to convey meaning, using spoken and written skills, including an extended range of vocabulary, for both practical and intellectual purposes as increasingly confident, accurate and independent users of the language.
- Gain fluency to interact effectively with users of the language in speech and in writing
- Develop communication strategies to sustain communication and build fluency and confidence.
- Engage critically with intellectually stimulating texts, films and other materials in the original language.
- Develop knowledge about matters central to the society and culture, past and present, of the country or countries where the language is spoken.

The A Level specification builds on the knowledge, understanding, and skills gained at GCSE. It constitutes an integrated study with a focus on language, culture, and society. The study of any Modern Foreign Language fosters a range of transferable skills including communication, critical thinking, research skills and creativity, which are valuable to the individual and to society. The content is suitable for students who wish to progress to employment or to further study, including a modern languages degree.

## Course Requirements

The minimum requirement to continue to A Level French is to achieve at least a Grade 7 in French GCSE.

## Career Prospects

The study of any Modern Foreign Language will allow students to access a whole new world of possibilities. With the fluency and control gained from A Level studies, our students will be sought after employees not only for their linguistic ability but also for their global awareness. Given the range of topics covered in the course, languages are a steppingstone into a plethora of careers and degrees. Many students go on to study Politics, Drama, History, Social Sciences and many more, even Medicine, and they often continue with that language at university too. Universities are impressed with A Level linguists and languages can often be the pathway into the career of one's dreams.

## Course Details

A Level - French	<b>Theme 1</b> <b>Aspects of French Speaking society: Current Trends</b>	<b>Theme 3</b> <b>Artistic Culture in the French-speaking world</b>
	<ul style="list-style-type: none"> <li>• The changing nature of family</li> <li>• The 'cyber-society'</li> <li>• The place of voluntary work</li> </ul>	<ul style="list-style-type: none"> <li>• A culture proud of its heritage</li> <li>• Contemporary francophone music</li> <li>• Cinema: the 7th art form</li> </ul>
	<b>Theme 2</b> <b>Aspects of French Speaking society: Current Issues</b>	<b>Theme 4</b> <b>Aspects of political life in the French-speaking world</b>
	<ul style="list-style-type: none"> <li>• Positive features of a diverse society</li> <li>• Life for the marginalised</li> <li>• How criminals are treated</li> </ul>	<ul style="list-style-type: none"> <li>• Teenagers, the right to vote and political commitment</li> <li>• Demonstrations, strikes – who holds the power?</li> <li>• Politics and immigration</li> </ul>

### Grammar

- A Level students will be expected to have studied the grammatical system and structures of the language during their course

### Literary texts and films

- Students must study one text and one film from a prescribed list

### Individual research project

- Students must identify a subject or a key question which is of interest to them and which relates to a country or countries where French is spoken
- They must select relevant information in French from a range of sources including the internet
- The aim of the research project is to develop research skills
- Students may choose a subject linked to one of the themes or sub-themes or to one of the works

#### Paper 1

##### Listening, reading and translation

Draws on vocabulary and structures across all four themes: current trends and issues in French-speaking society, artistic culture and political life. References are made to at least 2 francophone countries other than France.

**Section A:** Listening & responding to spoken passages

**Section B:** Reading & responding to a variety of text

**Section C:** Translation of a passage from French to English, translation of a passage from English to French.

**Written exam 2 hours 30 mins 100 marks** (50% of final A Level grade)

#### Paper 2

##### Written response to works

Draws on the study of two discrete French works: either two literary texts or one literary text and one film. The works are taken from a list provided.

**Section A:** Written response to works (literary texts)

**Section B:** Written response to works (film)

**Written exam 2 hours** 80 marks (20% of final A Level grade)

#### Paper 3

##### Speaking

Assessment of ability to use a range of language accurately, communicate and interact effectively, summarise and analyse findings from written sources relating to research subject and show knowledge and understanding about the culture and society of where the language is spoken.

**Task 1:** Draws on vocabulary and structures across all four themes

**Task 2:** Based on independent research selected and carried out by the student. Research may be based on the student's own subject of interest related to French society and culture.

**Oral exam 21-23 minutes** 60 marks (30% of final A Level grade)



# Geography – Edexcel – A Level 9GEO

## Course Outline

This course will appeal to you if you are curious about the world's places, people and environments; if you are interested in local, regional and global issues and if you wish to explore human, physical and environmental geographical relationships.

Geography empowers students to understand the complex relationships between people, places, and environments. Through this subject, learners will explore both physical and human processes that shape our world. Geography is an ideal choice for students interested in global issues, environmental science, and understanding cultural and societal dynamics.

There are opportunities to undertake fieldwork and research when investigating the topics chosen.

Fieldwork sites include an overseas trip and will involve additional cost along with it being compulsory and 20% NEA / A Level.

## Course Requirement and Progression

To enroll in the Geography course, students must demonstrate strong skills in both written communication and numeracy. A minimum achievement of Grade 6 or higher in both English Language and Mathematics is required. Additionally, for those pursuing the IGCSE pathway, a Grade 7 in Geography is recommended to ensure readiness for the advanced analytical and interpretive demands of the course. This standard supports students in achieving their full potential within the subject.

## Course Details

**A Level - Geography**  
(All exams taken at the end of Year 13)

### UNIT

#### Dynamic Landscapes

There are numerous topics studied by students including tectonic processes and hazards, landscape systems, processes and change, the water cycle and water insecurity, the carbon cycle and energy security and climate change futures. Students will develop their knowledge of physical environments and interactions, becoming increasingly competent in their analysis of complex people-environmental issues.

**Written exam of 2 hours**  
(30% of final A Level)

### UNIT

#### Synoptic Paper

Students will make use of the knowledge and content from previous units to apply to new information. This will be a synoptic assessment of geographical skills, knowledge and understanding within a place-based context.

**Written exam of 1hr 45 mins**  
(20% of final A Level)

### UNIT

#### Dynamic Places

This unit covers four topics: Globalisation which assesses the ever-changing world in terms of interconnectivity. Shaping places examining the variety of economic and social change at different scales and how these are managed. Superpowers and the pattern of dominance change over time. Finally, global development and connections and the challenges in measuring human health and rights at various locations. This includes the geopolitical interventions at different levels.

**Written exam of 2 hours**  
(30% of final A Level)

### UNIT

#### Independent Investigation

Students undertake an independent investigation involving compulsory fieldwork based on a question or issue defined and developed by the student. It will draw on knowledge and understanding from previous units to research, contextualise, analyse and summarise findings and data.

**Written report of 3000-4000 words**  
Based on questions or issue selected by the student  
(20% of final A Level)

## Assessment Criteria

---

The specification followed is the one offered by Edexcel. The course at all levels is assessed entirely by a final examination and NEA that is worth 20% of the overall grade.

## Career Prospects

---

Geography provides you with a wealth of transferable skills that enable you to flourish in a wide range of professions including:

Advertising, Environmental Sustainability, Surveying, Marketing, Charities, GIS, Data Analyst, Cartographer, Coastal Engineer, Flood Protection Manager, Travel, Tourism, Cultural Guides, Human Rights Officer, and United Nations Diplomat.







# Graphic Communication – A Level 7203

## Course Outline

This course will give you the opportunity to develop technical and artistic skills in Graphic Communication enabling you to develop your visual awareness and your creative response to design briefs.

Training you to work methodically by embracing the design process, you will produce creative work in both digital and traditional media, including drawing, illustration, typography, photography and printmaking, working with both 2D and 3D media and processes.

Covering many topics to develop your skills. You will learn specialist vocabulary, gain a knowledge and understanding of historical and contemporary graphic designers, relevant artists and photographers and will be expected to record your ideas and show their development.

## Course Details

## Course Requirement and Progression

It is not a prerequisite that a student wishing to study A Level Graphic Communication must have completed GCSE Graphic Communication, however the student will be expected to produce evidence of ability in Graphic Arts and related medium and interest in the subject before being accepted onto the course.

Entry onto the course will require a Grade 7 at GCSE or evidence of a high-quality portfolio of Art, Design, or Photography.



### A Level Graphic Communication

(All exams are taken at end of Year 13)

#### UNIT 1

##### **Part 1: Personal investigation - Coursework worth 60%**

The personal investigation allows students to generate and develop ideas, research both primary and contextual sources, record practical and written observations, experiment with media and processes and refine ideas towards producing resolved outcomes.

##### **Part 2: Personal study - Essay (Piece of continuous prose min. 1000 words)**

The personal study will be evidenced through critical written communication showing contextual research and

understanding in a minimum of 1000 words of continuous prose, contain integrated images (60% of final A Level grade).

#### UNIT 2

##### **Externally assessed assignment**

This component allows students opportunities to generate and develop ideas, research primary and contextual sources, record practical and written observations, experiment with media and processes, and refine ideas towards producing personal resolved outcomes in response to an externally set theme. A 15 hour controlled assessment will end the component.

(40% of final A Level grade)





# History – AQA – A Level 7042

## Course Outline

The aim of History at A Level is to widen student experience and develop qualities such as perception, analysis and judgement. It builds on the skills of GCSE with increased depth and complexity, giving students the opportunity to work more with contemporary evidence and think with greater independence. History enables students to learn about the past; to understand the past and through this process, come to a far better understanding of the present. History also offers students the opportunity to acquire

and improve on many of the key skills which have been identified as a priority for higher education and valued by employers.

## Course Requirements

To enroll in the History course, students are expected to have strong historical analysis and writing skills. A Grade 6 or higher in (I)GCSE English Language is required to ensure proficiency in these areas. Additionally, if you have previously studied (I)GCSE History, a minimum achievement of Grade 6 is necessary to meet the course requirements.

## Course Details

A Level - History (All exams taken at the end of Year 13)	COMPONENT 1	COMPONENT 2	COMPONENT 3
	Breadth Study Option 1C: The Tudors, England, 1485-1603  <b>Written exam of 2 hours 30 minutes</b> 3 questions – one compulsory interpretation question, two extended essays from a choice of 3. 40% of A Level	Depth Studies Option 2R: The Cold War, 1945-1991  <b>Written exam of 2 hours 30 minutes</b> 3 questions – one compulsory source question, two extended essays from a choice of 3. 40% of A Level	Historical investigation Coursework Personal Study  <b>1 essay of 4,500 words</b> 20% of A Level

## Career Prospects

Studying History gives you so much more than just understanding of the past: that's just the fascinating content that we use to develop the skills that are valued by universities and employers. The study of History is academically rigorous. It requires you to be highly analytical, write well, to sift evidence and create convincing arguments, to weigh opinions and reach balanced judgements and to see that there are always multiple possibilities and explanations. These skills are valued in business and finance, politics and law, journalism, management and administration. The study of History will only ever open doors.



# Mathematics – Edexcel – International A Level YMA01

## Course Outline

Mathematics has wide applications from areas such as business and finance to industry, science and technology. A qualification in mathematics can help you towards a future career in these areas and others. There is currently an international shortage of qualified Mathematicians.

## Course Requirements and Progression

You will be expected to have achieved at least a Grade 7 at the higher level of (I)GCSE Mathematics. However, a Grade 8 or above is preferred due to the challenge of the course.

## Course Details

### A Level Mathematics

#### Pure 1

Algebra and functions; coordinate geometry in the (x, y); trigonometry; differentiation; integration.

#### Pure 2

Proof; algebra and functions; coordinate geometry in the (x, y) plane; sequences and series; exponentials and logarithms; trigonometry; differentiation; integration

#### Pure 3

Algebra and functions; trigonometry; exponentials and logarithms; differentiation; integration; numerical methods.

#### Pure 4

Proof; algebra and functions; coordinate geometry in the (x, y) plane; binomial expansion; differentiation; integration; vectors.

#### Statistics 1

Mathematical models in probability and statistics; representation and summary of data; probability; correlation and regression; discrete random variables; discrete distributions; the Normal distribution

#### Mechanics 1

Mathematical models in mechanics; vectors in mechanics; kinematics of a particle moving in a straight line; dynamics of a particle moving in a straight line or plane; statics of a particle; moment

## Assessment Criteria

The course has 6 modules which are completed over the 2 years. The course has 4 Pure units and 2 Additional units. In the first year pupils will cover Pure Mathematics 1 and 2 along with Statistics 1. In year 2, the course is Pure Mathematics 3 and 4 with Mechanics 1.

Written examination of 1 hour 30 minutes per module. Each module has 75 marks.

## Career Prospects

Future Careers Actuary, Statistics and Econometrics, Mechanical Engineering, Finance, Medicine, Aerospace engineering and Aviation, Economics, Accounting, Architecture, Computer science and AI, Software engineering.



# Further Mathematics – Edexcel – International A Level

## Course Outline

Students taking A Level Further Mathematics MUST also take A Level Mathematics as well.

Further Mathematics is taken along with Mathematics. There are six modules to complete for Further Mathematics over the two years. Compulsory units are FP1 and either FP2 or FP3, optional units will then be Statistic 2, Mechanics 2 or Decision 1

## Course Outline

Students have to achieve Grade 9 at the Higher level of (I) GCSE Mathematics. Acceptance onto the Further Mathematics A Level course for students who achieve a grade 8 at GCSE will be at the discretion of the Mathematics Faculty. Most University institutions see the Further Mathematics A Level as an advantage for courses such as Mathematics, Physics, Astronomy, and Engineering.

## Course Details

### A Level Further Mathematics

#### FP1

Complex numbers; roots of quadratic equations; numerical solution of equations; coordinate systems; matrix algebra; transformations using matrices; series; proof.

#### FP2

Inequalities; series; further complex numbers; first order differential equations; second order differential equations; Maclaurin and Taylor series; Polar coordinates.

#### FP3

Hyperbolic functions; further coordinate systems; differentiation; integration; vectors; further matrix algebra.

#### S2

The Binomial and Poisson distributions; continuous random variables; continuous distributions; samples; hypothesis tests.

#### M2

Kinematics of a particle moving in a straight line or plane; centre's of mass; work and energy; collisions; statics of rigid bodies.

#### D1

Algorithms; algorithms on graphs; algorithms on graphs II; critical path analysis; linear programming

## Assessment Criteria

Six modules are externally assessed. Written examination of 1 hour 30 minutes per module. Each module has 75 marks .

## Career Prospects

Future Careers Actuary, Statistics and Econometrics, Mechanical Engineering, Finance, Medicine, Aerospace engineering and Aviation, Economics, Accounting, Architecture, Computer science and AI, Software engineering



# Photography – AQA – A Level 7206

## Course Outline

A broad-based course exploring practical and critical/contextual work through a range of 2D and/or 3D processes and media associated with Photography, Fine Art, Graphic communication, Textile design, and Three-dimensional design. During this course, students will produce a portfolio exploring a range of practical work within the area of Photography. Students will have the opportunity to develop skills with lighting, aperture, depth of field, shutter speed and movement, as well as both traditional and digital methods inspired by the work of photographers, designers and cultures.

## Course Requirements

It is not a prerequisite that a student wishing to study A Level Photography must have completed GCSE Photography, however the student will be expected to produce evidence of ability in Photography and interest in the subject before being accepted onto the course. Entry onto the course will require a Grade 7 at GCSE or evidence of a high-quality portfolio in Photography.

## Course Details

### A Level - Photography

(All exams are taken at the end of Year 13)

#### Unit 1 - Portfolio 60% coursework

##### Year 12

The focus of Year 12 is to concentrate on developing the core skills in Photography. Students have the opportunity to explore all the various disciplines offered within the subject whilst developing their own personal style of Photography.

##### UNIT 1

**Part 1:** Personal investigation 60% Coursework The personal investigation allows students to generate and develop ideas, research both primary and contextual sources, record practical and written observations, experiment with media and processes and refine ideas towards producing resolved outcomes.

**Part 2:** Personal study - Essay The personal study will be evidenced through critical written communication showing contextual research and understanding in a minimum of 1000 words of continuous prose, which may contain integrated images (60% of final A Level grade).

Written material will clarify the focus of investigations and demonstrate critical understanding of contextual and other sources. The written material will be between 1000 and 3000 words.

### Component 2

Externally set assignment  
40% Preparatory work from 1st February of final Year  
15 hour supervised exam

An externally set paper containing eight questions as starting points whereby one is chosen. Explore intentions and develop a sustained line of reasoning from initial starting points to a final realisation. Investigate concepts through photographer research,

Explore intentions and develop a sustained line of reasoning from initial starting points to a final realisation. Investigate concepts through photographer research, contextual ideas, media and exploring processes. There is no restriction on the scale of work produced.

During a 15-hour exam, a finished outcome or series of related finished outcomes, informed by the preparatory work will be produced.

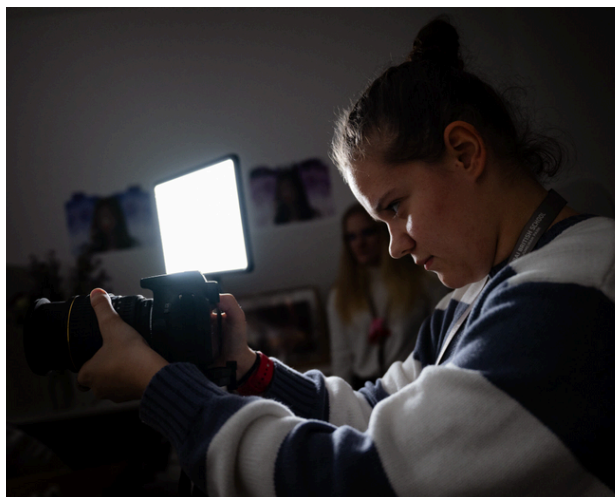
### Assessment Criteria

A Level Component 1 - Internally set, internally marked and externally moderated. A Level Component 2 - Externally set, internally marked and externally moderated.

Four assessment objectives must be met throughout the course, these objectives focus on research, experimenting, generating ideas and outcomes.

### Career Prospects

A qualification in Photography A Level can be used in many career paths, some of which you may not have considered; Art Historian, Publisher, Gallery Manager, Writer/critic, Game Designer, Stop Motion Animator, Interface Designer, Advertiser, Video/film/photographer, Teacher, Lecturer with an ever evolving digital world, Photography really is at the forefront.







# Physics – Edexcel – A Level 9PH0

## Course Outline

The A Level Physics courses offered by Edexcel are designed to encourage students to apply their knowledge and understanding of physics to situations they have not seen before. Good scientific practice and critical thinking skills are also central to the course.

## Practical Endorsement

There is a Pass/Fail practical element to this course. Students must have consistent good attendance and complete all required practicals during the two years to pass the practical endorsement.

## Course Details

## Course Requirements and Progression

To follow the Physics course within the Sixth Form you would be expected to meet the general requirements for A Level courses. You need to have achieved at least a Grade 7 in GCSE Physics and a Grade 6 or above in both GCSE Chemistry and GCSE Biology. Students that have studied GCSE Combined Science should have achieved at least a Grade 7, 7 with a grade 7 in the Physics component. In addition, as the subject is based on developing numerical and analytical skills, a Grade 7 or higher at (I)GCSE Mathematics is required. Pupils must also take Mathematics A Level. Those students applying who have not studied GCSEs will be considered on a case by case basis.

Year 1 Content Physics	Core Physics	Core Physics
	<b>Unit concept approach:</b> <ul style="list-style-type: none"> <li>• Working as a Physicist</li> <li>• Mechanics</li> <li>• Electric Circuits</li> </ul>	<b>Unit concept approach:</b> <ul style="list-style-type: none"> <li>• Working as a Physicist</li> <li>• Materials</li> <li>• Waves &amp; Particle Nature of Light</li> </ul>

\* AS Level physics exams do not count towards the A Level qualification

A Level – Physics (All exams are taken at the end of Year 13)	UNIT 1	UNIT 2	UNIT 3
	<b>Concept approach:</b> Working as a Physicist, Mechanics, Electric Circuits, Further Mechanics, Electric and Magnetic Fields, Nuclear and Particle Physics  <b>A written paper of 1hr 45 mins</b> with objective short and long questions based on Mechanics, Electrical Circuits, Further Mechanics, Electric and Magnetic Fields, and Particle Physics (30% of final A Level grade)	<b>Concept approach:</b> Working as a Physicist, Materials, Waves and Particle Nature of Light, Thermodynamics, Space, Nuclear Radiation, Gravitational Field, Oscillations  <b>A written paper of 1hr 45 mins</b> with objective short and long questions based on Waves, Materials Quantum Physics, Space, Thermodynamics and Oscillations. (30% of final A Level grade)	<b>General and Practical Principles in Physics</b> This paper will contain synoptic material on the whole A Level course and assessment of experimental techniques developed over the course  <b>Written paper of 2hrs 30 mins</b> With multiple-choice, short answer, open-responses, calculations, and extended writing questions. This paper may draw on any of the topics in the entire specification (40% of final A Level grade)

## Career Prospects

Physics is a prerequisite for many Technical/Engineering careers and for entry to most Technical/Engineering degrees.



# Psychology – AQA – A Level 7182

## Course Outline

Psychology is the Science of mind, brain, and behaviour. It seeks to understand why and how humans behave as they do through controlled scientific research. It borders between science and social science/humanities. It provides balance to either scientists or social scientists and is one of the likely future subjects as neuroscience becomes the leading research field of the century.

## Course Requirements and Progression

To study Psychology at A Level, there is a significant focus on mathematical and biological content. Students will also be required to demonstrate high written and oral skills. For this reason you should have achieved a Grade 6 or above in GCSE English Language, GCSE Mathematics and GCSE Biology. Students who have not studied GCSE Biology will need to have secured a Grade 6,6 or above in the equivalent GCSE Combined Science course. Whilst it is not a requirement of the course that students have studied Psychology at GCSE, those who have, will need to have achieved a Grade 6 in this also.

## Course Details

See the syllabus overview on the AQA [website](#)

A Level - Psychology (All exams are taken at the end of Year 13)	<b>Paper 1</b>	<b>Paper 2</b>	<b>Paper 3</b>
	<b>Introductory topics in Psychology:</b> Social Influence, Memory, Attachment, Psychopathology	<b>Psychology in context:</b> Approaches in Psychology, Biopsychology, Research Methods	<b>Issues and options in Psychology:</b> Gender, Schizophrenia, Forensic Psychology
	<b>Written exam of 2 hours</b> (33.3% of final A Level grade)	<b>Written exam of 2 hours</b> (33.3% of final A Level grade)	<b>Written exam of 2 hours</b> (33.3% of final A Level grade)

## Assessment Criteria

See above: 100% examination subject, although much practical work is included for context.

## Career Prospects

Psychology is a challenging, fascinating, and strong academic, subject. Psychology is an excellent general complement to other sciences at A Level;

it is an opportunity to include a “human” science for those of a more English / humanities nature who don't feel completely comfortable with conventional sciences but wish to show CV range; it is a rapidly expanding subject with strong career potential – the science of the 21st Century. Realistic careers include Management, Marketing, Advertising, Profiling, Recruitment, Education, Coaching / Training, Healthcare, Forensic Law, Forces Officership, Counselling / Therapy, and Research work.



# Spanish – AQA – A Level 7692

## Course Outline

The study of any Modern Foreign Language at A Level will both develop linguistic competence and allow a real insight into the culture of the countries where the language is spoken. By continuing to study a language beyond GCSE, you will:

- Develop control of the language system to convey meaning, using spoken and written skills, including an extended range of vocabulary, for both practical and intellectual purposes as increasingly confident, accurate and independent users of the language.
- Develop your ability to interact effectively with users of the language in speech and in writing.
- Develop communication strategies to sustain communication and build fluency and confidence.
- Engage critically with intellectually stimulating texts, films and other materials in the original language.
- Develop knowledge about matters central to the society and culture, past and present, of the country or countries where the language is spoken

The A Level specification builds on the knowledge, understanding, and skills gained at GCSE. It constitutes an integrated study with a focus on language, culture, and society. The study of any Modern Foreign Language fosters a range of transferable skills including communication, critical thinking, research skills and creativity, which are valuable to the individual and to society. The content is suitable for students who wish to progress to employment or to further study, including a Modern Languages Degree.

## Course Requirements and Beyond Dubai British School Jumeirah Park

The study of any Modern Foreign Language will allow students to access a whole new world of possibilities. With the fluency and control gained from A Level studies, our students will be sought after by employers not only for their linguistic ability but also for their global awareness. Given the range of topics covered in the course, languages are a steppingstone into a plethora of careers and degrees. Many students go on to study Politics, Drama, History, Social Sciences and many more, even Medicine, and they often continue with that language at university too. Universities are impressed with A Level linguists and languages can often be the pathway into the career of one's dreams. To study Spanish at A Level, a grade 6 at GCSE is required.

## Course Details

A Level – Spanish	<b>Theme 1</b> <b>Aspects of Hispanic Society</b> <ul style="list-style-type: none"> <li>• Modern and Traditional values</li> <li>• Cyberspace</li> <li>• Equal rights</li> </ul>	<b>Theme 3</b> <b>Artistic Culture in the Hispanic world</b> <ul style="list-style-type: none"> <li>• Modern day idols</li> <li>• Spanish regional identity</li> <li>• Cultural Heritage</li> </ul>
	<b>Theme 2</b> <b>Multiculturalism in Hispanic Society</b> <ul style="list-style-type: none"> <li>• Immigration</li> <li>• Racism</li> <li>• Integration</li> </ul>	<b>Theme 4</b> <b>Aspects of political life in the Hispanic world</b> <ul style="list-style-type: none"> <li>• Today's youth, tomorrow's citizens</li> <li>• Monarchies and dictatorships</li> <li>• Popular movements</li> </ul>

### Grammar

A Level students will be expected to have studied the grammatical system and structures of the language during their course.

### Literary texts and films

Students must study one text and one film from a prescribed list.

### Individual research project

Students must identify a subject or a key question which is of interest to them and which relates to a country or countries where Spanish is spoken. They must select relevant information in Spanish from a range of sources including the internet. The aim of the research project is to develop research skills. Students may choose a subject linked to one of the themes or sub-themes or to one of the works.

#### Paper 1

##### Listening, reading and translation

Draws on vocabulary and structures across all four themes: current trends and issues in Hispanic society, artistic culture and political life. References are made to at least 2 Hispanic countries other than Spain.

**Section A:** Listening & responding to spoken passages.

**Section B:** Reading & responding to variety of text.

**Section C:** Translation of a passage from Spanish to English, translation of a passage from English to Spanish.

**Written exam 2 hours 30 min  
100 marks** (50% of final A Level grade)

#### Paper 2

##### Written response to works

Draws on the study of two discrete Spanish works: either two literary texts or one literary text and one film. The works are taken from a list provided.

**Section A:** Written response to works (literary texts).

**Section B:** Written response to works (film).

**Written exam 2 hours 80 marks** (20% of final A Level grade)

#### Paper 3

##### Speaking

Assessment of ability to use a range of language accurately, communicate and interact effectively, summarise and analyse findings from written sources relating to research subject and show knowledge and understanding about the culture and society of where the language is spoken.

**Task 1:** Draws on vocabulary and structures across all four themes.

**Task 2:** Based on independent research selected and carried out by the student. Research may be based on one of the themes or on the student's own subject of interest related to French society and culture.

**Oral exam 21-23 minutes 60 marks** (30% of final A Level grade)

## Career Prospects

The study of any Modern Foreign Language will allow students to access a whole new world of possibilities. With the fluency and control gained from A Level studies, our students will be sought after by employers not only for their linguistic ability but also for their global awareness. Given the range of topics covered in the course, languages are a steppingstone into a plethora of careers and degrees. Many students go on to study Politics, Drama, History, Social Sciences and many more, even Medicine, and they often continue with that language at university too. Universities are impressed with A Level linguists and languages can often be the pathway into the career of one's dreams.



**DUBAI  
BRITISH  
SCHOOL**  
JUMEIRAH PARK

# BTEC SUBJECT OPTIONS





# Business Studies – BTEC International Level 3 Subsidiary (Single Award)

## Course Outline

The BTEC International Subsidiary at Level 3 is a qualification that is designed to provide specialist work-related qualifications. It gives learners the knowledge, understanding and skills that they need give learners an introduction to understanding of business activity, and marketing and communication — all fundamental to the success of business organisations.

## Aims of the Course

The key to doing well in this subject is time management. The benefit of undertaking a coursework subject like BTEC is that when you have submitted work, you can have the opportunity to improve it, unlike an examination subject which is a one off assessment. You will develop excellent research skills and also become an excellent independent learner. These are all valuable skills when moving onto higher education or the workplace.

## Beyond Dubai British School Jumeirah park

The course leads onto either university acceptance or the world of work. It is recognised by most universities for progressing onto degree courses. However, it would be wise to check with your potential university destination to ensure they accept it, as some of the Russell Group universities may restrict the number of vocational courses they accept in an application from one student.

## Course Details

The course is different to many others as it is assessed 100% by completing coursework tasks, applying business knowledge to real business situations. A key element of the course is to allow encouraged that students attend these trips. However, there will be a cost attached to these trips, therefore although encouraged they are not compulsory.

The units will cover such topics as marketing, accounts, human resources and ICT in business. The qualification gives a broad background into a business.

### Core units

- 1.Exploring Business
- 2.Research and Plan a Marketing Campaign

Students will then choose 2 optional units decided by teaching staff.

## Course Requirements

Students must have a total of four 9-4 Grades at (I)GCSE Level, including a grade 4 in both Mathematics and English Language, a grade 4 in Business Studies GCSE, and a merit for Level 2 (if studied).

*Note: Exam fees are paid in full at the beginning of Year 12 for the full 2-year course.*



# Business Studies – BTEC International Level 3 Diploma (Double Award)

## Course Outline

The BTEC International Diploma at Level 3 is a qualification that is designed to provide specialist work-related qualifications. It gives learners the knowledge, understanding and skills that they need to prepare them for employment. The five core units give learners an introduction to understanding of business activity, marketing and communication, finance, managing an event and business decision-making — all fundamental to the success of business organisations.

## Aims of the Course

The key to doing well in this subject is time management. The benefit of undertaking a coursework subject like BTEC is that when you have submitted work, you can have the opportunity to improve it, unlike an examination subject which is a one-off assessment. You will develop excellent research skills and also become an excellent independent learner. These are all valuable skills when moving onto higher education or the workplace.

## Career Prospects

The course leads onto either university acceptance or the world of work. It is recognised by most universities for progressing onto degree courses. However, it would be wise to check with your potential university destination to ensure they accept it, as some of the Russell Group universities may restrict the number of vocational courses they accept in an application from one student.

## Course Details

The course differs to many others as it is assessed 100% by completing coursework tasks, applying business knowledge to real business situations. There are two choices, Single Award, which is equivalent to obtaining one A Level and the Double Award which is the equivalent of obtaining two A Levels. This is made up of 720 guided learning hours over a 2-year period.

Students will also be given the opportunity to go on visits to local businesses and tourist attractions. A key element of the course is to allow students to relate theory to real life, therefore it is encouraged that students attend these trips. However, there will be a cost attached to these trips, therefore although encouraged they are not compulsory. The units will cover such topics as marketing, accounts, human resources and ICT in business. The qualification gives a broad background into business.

### Core units — all five units must be taken

1. Exploring Businesses
2. Research and Plan a Marketing Campaign
3. Business Finance
4. Managing an event
7. Business Decision-Making

Students will then choose four optional units decided by the Business teaching staff.

## Course Requirements

To follow this course within the Sixth Form you would be expected to meet the general requirements of four 9-4 Grades or higher at (I)GCSE Mathematics and English Language, a grade 4 in Business Studies GCSE, and a merit for Level 2 (if studied).

**Note: Exam fees are paid in full at the beginning of Year 12 for the full 2-year course.**



# Travel & Tourism – BTEC International Level 3 Subsidiary (Single Award)

## Course Outline

.....

The 360-credit BTEC Travel and Tourism Course covers the key knowledge and practical skills required in the Travel and Tourism sector. It is equivalent to one A Level.

## Course Details

.....

The Travel and Tourism sector continues to grow at a rapid pace with the amount of travel undertaken by individuals for both leisure and business purposes continuing to increase. An expansion in the short-break market has led to a growth of regional airports in the UK and across Europe and a rise in the number of new hospitality enterprises including health spas and boutique hotels. This rapid expansion has led to a huge demand for a more flexible skilled workforce. Specific skills gaps identified in the emerging Sector Qualification Strategy (SQS) for Travel and Tourism include customer service skills, destination geography, knowledge of working with children, and business skills. The course has been structured to encourage the acquisition and development of these competencies prior to, or while in, employment in the travel and tourism sector. The two mandatory units give learners an introduction to and understanding of the Travel and Tourism industry.

- 1.The Travel and Tourism Industry
- 2.Customer Service in Travel and Tourism

Students will then select optional units decided by the specialist teaching staff, these include topics such as Sustainable Tourism, Worldwide Travel and Tourism Destinations, Airport Experience, and My Country as a Destination.

In Year 13, Travel and Tourism students also have the opportunity to undertake work experience within a related field. This is normally undertaken in Term 2 and 3. The organisation of the work experience will be discussed with the teacher once the student has found a suitable placement.

## Assessment Criteria

.....

The course is different from many others as it is assessed 100% by completing coursework tasks that will be studied over 360 guided learning hours over a 2-year period.

## Course Requirements

.....

Students must have a total of four 9-4 (A\*-C) Grade at (I)GCSE Level, including Mathematics and English Language. Students are not required to have studied this subject at GCSE but will normally be expected to have a good level of numerical and written skills as well as good ICT skills to be successful.

*Note: Exam fees are paid in full at the beginning of Year 12 for the full 2-year course.*



# Sport - BTEC International Level 3 Subsidiary (Single Award)

## Course Outline

The 60-credit BTEC in Sport will give learners a solid foundation in the Sports sector, enabling them to develop essential skills required for gaining employment, securing career progression, or progressing to further qualifications and training required to achieve their goals. It is broadly equivalent to one GCE A Level.

## Aims of the Course

The course has been designed to give learners the opportunity to develop a range of techniques, personal skills and attributes essential for successful performance at university and in working life.

### Learners will complete 1 mandatory unit:

- Health and Wellbeing in Sport

Learners will then complete 4 or 5 additional units from a variety of topics, depending on the guided learning hours. These topics will be selected at the start of the two year course by the specialist staff. Units may include Sport Psychology, Sports Nutrition, Rules and Regulations in sport and many more.

## Beyond Dubai British School Jumeirah Park

The BTEC qualification in Sport provides an introduction to the sector for learners looking to build a career in sport, within one of its occupational areas.

These areas may include careers in exercise and fitness, coaching and leadership and sports development. It combines well with a large number of subjects and supports entry to higher education courses in a very wide range of disciplines (depending on the subjects taken alongside). For learners who wish to study an aspect of sport in higher education, opportunities include:

- BA (Hons) in Sport Studies and Business Studies
- BSC (Hons) in Sport Psychology
- BA (Hons) in Sports Education and Special and Inclusive Education
- BSC (Hons) in Sport and Exercise Science

However, it would be wise to check with your potential university destination to ensure you know their entry requirements.

## Assessment Criteria

The course is assessed 100% by completing coursework tasks that will be studied over 360 guided learning hours over a 2-year period.

## Course Requirements

Students must have a total of four 9-4 (A\*- C) Grades at (I)GCSE Level, including Mathematics and English Language.

*Note: Exam fees are paid in full at the beginning of Year 12 for the full 2-year course.*



# Information Technology – BTEC International Level 3 Subsidiary (Single Award)

## Course Outline

The Dubai British School Jumeirah Park BTEC IT Level 3 Subsidiary Diploma course will provide students with hands-on, practical experience which will prepare them for a future career in the IT industry. Given the huge growth in IT-related jobs and services in the global economy, students will gain skills and experience which will improve their future employability and innovation skills. The major difference to the Level 2 or IGCSE IT curriculum is students will spend a significantly larger portion of their time working on project-based assignments.

The BTEC Level 3 IT is also suitable for students who may not envisage a career focused on the IT industry, yet wish to gain experience and knowledge of IT systems and programming, which will serve them well across future career pathways. Without the pressure of external examinations to consider, we are able to design our assessment around the individual needs and preferences of the students. We design activities that allow for dynamic assessment through practical experiences rather than preparing for end of year examinations. This will mean that students should be prepared to not simply focus on basic Microsoft Office skills, but creative and exciting projects designed to encourage their creativity and gain high level IT skills.

Furthermore, the Dubai British School Jumeirah Park BTEC IT Level 3 will enable students to gain a better understanding of what it would be like to work in professions such as; Graphics Design, Computer Animation, Games Development and so on. This is a course perfectly suited for all students who wish to have a hands-on vocational experience, whilst gaining 21st century skills in the process.

## Course Details

The course has been designed to give learners the opportunity to develop their IT knowledge and skills and attributes essential for successful performance at university and in working life. Learners will complete 2 mandatory units and 4 Optional units:

### Mandatory Units

- Information Technology Systems - strategy management and infrastructure
- Website Development

### Optional units

TBC by the school but the range of units available can be seen [here](#). Possible units may include: Computer Game Development, Digital 2D and 3D Graphics, Digits Animation and Effects, and Mobile Apps Development, and Enterprise in IT.

### Assessment Criteria

The course is assessed 100% by completing coursework tasks that will be studied over 360 guided learning hours over a 2-year period.

### Course Requirements

Students must have a total of four 9-4 Grades at (I)GCSE Level, including Mathematics and English Language.

Students completing BTEC courses must have achieved a Merit or above. Students are not required to have studied this subject at GCSE, but will normally be expected to have a good level of written skills and ICT skills to be successful.

Entry grades should be discussed with the BTEC teachers if you have any queries.

**Note: Exam fees are paid in full at the beginning of Year 12 for the full 2-year course.**





# Performing Arts - BTEC International Level 3 Diploma Double Award and option of Extended Diploma)

## Course Outline

The BTEC National Diploma is a qualification that is designed to provide specialist work-related qualifications. It gives learners the knowledge, understanding and skills that they need to prepare them for employment or further education in that field. The course is made up of 120 credits to be earned from a combination of core modules and select modules. The wide variety of modules cater to each individual learner in Performing Arts. The course is equivalent to 2 A Levels.

## Aims of the Course

Through partnership with Dubai British School Jumeirah Park, Dubai Performing Arts principles Lisa Scott-Lee (Steps) and Johnny Shentall (leading West End performer and faculty member of Arts Ed, GSA, Performers, PPA), have engaged leading industry professionals to offer a rounded yet detailed approach to coursework, offering students the opportunity to develop their knowledge and skills across a variety of topics.

By following a set framework across multiple modules in solo and group projects, they have an opportunity to study various facets of the Performing Arts industry guiding them towards further education in their specialised subject and employment opportunities.

Alongside a team of performing arts and industry focused teachers, the course is structured and led by Jennifer Tierney (Head of BTEC PA) who brings a range of experience to the course from a performance and educational background. Alongside performing in West end Musicals such as "Come From Away", "Wicked" and "Mamma Mia", she has been present on the faculty of leading performing arts faculties on both Diploma and Degree courses including Laine Theatre Arts, Bird College, Performers College and Trinity Laban.

## Course Details

The BTEC in Performing Arts is a 2-year program consisting of 720 guided learning hours split across multiple units. The BTEC is made up of 4 mandatory units and 8 optional units. It will be taught over 12 hours per week and has a total of 120 credits. The BTEC has no formal examination at the end, it consists purely of continuous assessment throughout the 2 year period based on both written coursework and practical assessments.

## Core Units

1. Planning a career in the performing arts industry
2. Exploring and developing skills
3. Create performance material & performance for an audience
4. Producing a personal project
5. Self promotion & networking
6. Collaborative creative of performance project

## Course Requirements

Students will submit a self-tape audition and upon invitation, have a one-to-one interview with the team to discuss their goals and future prospects within the performing arts.

To follow this course within the Sixth Form you would be expected to meet the general requirements of four 9-4 Grades or higher at (I)GCSE Mathematics including English Language.

*Note: Exam fees are paid in full at the beginning of Year 12 for the full 2-year course.*



# Applied Science – BTEC International Level 3 Subsidiary Diploma

## Course Outline

The BTEC qualification encompasses applied learning that brings together knowledge and understanding with practical and technical skills. This applied learning is achieved through learners performing vocational tasks that encourage the development of appropriate vocational behaviours and transferable skills such as communication, teamwork and research and analysis.

## Aims of the Course

The course has been designed to allow all learners to follow a coherent programme of study, acquiring knowledge, understanding, and skills that will be recognised and valued by higher education and employers. Learners will complete 3 mandatory units

- Principles and Applications of Biology 1
- Principles and Applications of Chemistry 1
- Principles and Applications of Physics 1

Learners will also study 3 additional topics from a variety of topics. These topics will be selected at the start of the two- year course by the specialist staff and may include Disease and Infection, Astronomy and Space Science, Animal conservation and many more.

## Beyond DBSJP

This qualification is designed to support learners who are interested in learning about the science industry alongside other scientific fields of study, with a view to progressing to a wide range of higher education courses, not necessarily in science-related subjects. Jobs available in these areas include:

- Chemical Technician
- Biomedical Scientist Clinical
- Scientist Environmental
- Scientist.

For learners who wish to study an aspect of Science in higher education, opportunities include:

- BSc (Hons) in Chemistry with Analytical Science
- BSc (Hons) in Bioscience
- BSc (Hons) in Environmental Science
- Higher National Diploma (HND) in Applied Science.

However, it would be wise to check with your potential university destination to ensure you know the entry requirements.

## Assessment Criteria

The course is assessed 100% by completing coursework tasks that will be studied over 360 guided learning hours over a 2-year period.

Learners are assessed using a variety of methods to help them develop a broad range of transferable skills. Learners could be given opportunities to:

- Write up the findings of their own research
- Use case studies to explore complex or unfamiliar situations
- Carry out projects for which they have choice over the direction and outcomes
- Demonstrate technical skills using appropriate tools/processes, etc.

## Course Requirements

Students must have a total of four 9-4 grades at (I)GCSE Level including Science, Mathematics and English Language.

They should have achieved at least a grade 4 in Combined Science or a grade 4 or above in each separate science.

*Note: Exam fees are paid in full at the beginning of Year 12 for the full 2-year course.*



# Hospitality – BTEC International Level 3 Subsidiary Diploma

## Course Outline

The qualification is designed to give students a more comprehensive understanding of the hospitality industry. Students will develop advanced practical and theoretical knowledge in areas such as food service, hospitality management, and customer relations, preparing them for higher education or immediate employment in the industry.

## Aims of the Course

The Pearson BTEC International Level 3 Subsidiary Diploma in Hospitality aims to provide learners with the knowledge, skills, and understanding necessary for a successful career in the hospitality sector. It emphasizes applied learning and prepares students for progression into higher education or entry-level employment within the industry.

## Mandatory units – learners complete and achieve these units

- The Hospitality Industry
- Environment and Sustainability in the Hospitality Industry
- Customer Service Provision in Hospitality

## Optional Units Chosen by Teacher

Learners must complete at least three optional units to complement their mandatory study.

## Course Requirements

The qualification offers a broad basis of study in the hospitality sector, enabling progression into various roles or further educational opportunities. Jobs available in these areas include:

- Front Office
- Operational management in hospitality
- Chef de Partie
- Events Organiser

## Course Requirements

- Target Audience: Designed for learners aged 16-19 who wish to pursue careers in hospitality through higher education or entry-level roles.
- Prerequisites: No specific prerequisites, but a keen interest in hospitality and a willingness to engage in practical and theoretical studies are beneficial.
- Assessment Method: Internal assessments using a mix of assignments and practical evaluations, along with Pearson Set Assignments for specific units.

The Extended Diploma is recognised by higher education institutions as fully meeting admission requirements to many relevant courses in a variety of areas of the hospitality industry, for example:

- BSc (Hons) in Business Studies and Hospitality Management
- BSc (Hons) in International Tourism with Hospitality Management
- BBA (Hons) in Culinary Industry Management
- BA (Hons) in International Hospitality Management
- BSc (Hons) in Event Management.

NB: learners should always check the entry requirements for degree programmes with the relevant higher education provider.



**DUBAI  
BRITISH  
SCHOOL**  
JUMEIRAH PARK

# Forms

# EXAMINATION AGREEMENT FORM

Name of Student: .....

Year Group and Class: .....

I hereby confirm that I have fully read and accept the terms and conditions as indicated in the Examination Guidebook that is available on the Dubai British School Jumeirah Park website. I agree to ensure that all costs of A Level examinations and BTEC course fees will be paid in advance of exams being taken and that all materials/textbooks belonging to Dubai British School Jumeirah Park will be returned at the end of each academic year or on leaving Dubai British School Jumeirah Park. Any books lost/damaged/not returned relating to my son/daughter's course of study must be paid for before any examination results will be released.

I confirm that I am fully aware that certificates may not be released until such time as all outstanding fees/invoices issued by Dubai British School Jumeirah Park have been settled in full. I confirm that this agreement will be for the entire duration of my son/daughter's secondary education at Dubai British School Jumeirah Park.

Name of Parent: .....

Signature: ..... Date: .....





**DUBAI  
BRITISH  
SCHOOL**  
JUMEIRAH PARK

**tāaleem**  
inspiring young minds

# DUBAI BRITISH SCHOOL JUMEIRAH PARK

## SIXTH FORM CONTRACT

Name of Student: .....

I understand that I have accepted a place at Dubai British School Jumeirah Park Sixth Form conditional upon the following requirements being met at all times.

- Attend all school lessons regularly and other activities within the Sixth Form timetable regularly and punctually
- Be present for every registration session by 8.30 at the latest and attend assemblies as required
- Use the non-timetabled time appropriately.
- Not leave the school site during lesson time unless previously agreed and discussed with the Head of Sixth Form
- Adhere to the Sixth Form dress code by being smart and presentable at all times.
- Meet all deadlines set for homework and coursework for all subjects
- At all times set a good example to the younger students in the school
- Behave in an exemplary manner in accordance with the school's Code of Conduct
- Respect the school surroundings and recognise the right of other students to study undisturbed
- Notify the school in case of absence

I understand that progression into Year 13 is subject to me obtaining the minimum of a D grade at the end of Year 12 in three or more subjects.

I understand that my attendance and punctuality record, as well as my general conduct and behaviour, will be referred to in any formal reference the school releases.

I also understand that my place in Year 12 will begin with a probation period and that my place will be reviewed in October, early November after an internal assessment by subject Teachers, tutors, Heads of Faculty, and the Deputy Head teacher.

If I am identified as a cause for concern in any of the areas of assessment, I may:

1. Have my probation extended.
2. If required by subject teachers, be assessed at any other time.
3. Be required to change/drop courses.

I agree that I will meet all the requirements at all times. I also understand that failure to meet these requirements may result in me failing my probation period and/or being asked to withdraw from the school.

Signed and Date (Student) .....

Signed and Date (Parent) .....

Signed and Date (Tutor) .....





**DUBAI  
BRITISH  
SCHOOL**  
JUMEIRAH PARK

**tāaleem**  
inspiring young minds

# YEAR 12 OPTIONS FORM

Sixth Form Options 2025/26



Block A	Block B	Block C	Block D
Biology	Physics	Chemistry	Mathematics
BTEC Business Studies (S)	BTEC Science	BTEC IT	BTEC Travel & Tourism
Further Mathematics	BTEC Business Studies (D)	BTEC Performing Arts (D)	BTEC Sport
Business Studies	Graphic Communication	Economics	BTEC Performing Arts (T)
English Literature	Psychology	Computer Science	Photography
	English Language	Geography	French
	Art & Design	History	Spanish
	BTEC Performing Arts (S)	Product Design	
		BTEC Hospitality	

N.B. Subjects will only run if there are viable numbers. Historically, subjects have not run with less than 3 students. Please indicate which three subject choices you wish to study and ensure you select only one subject from each block. If you wish to study four subjects please submit a 4th option, however this will only be accepted upon discussion with Ms Evans.

Block A	Block B	Block C	Block D

Reserve Choice.....



**DUBAI  
BRITISH  
SCHOOL**  
JUMEIRAH PARK

**tāaleem**  
inspiring young minds